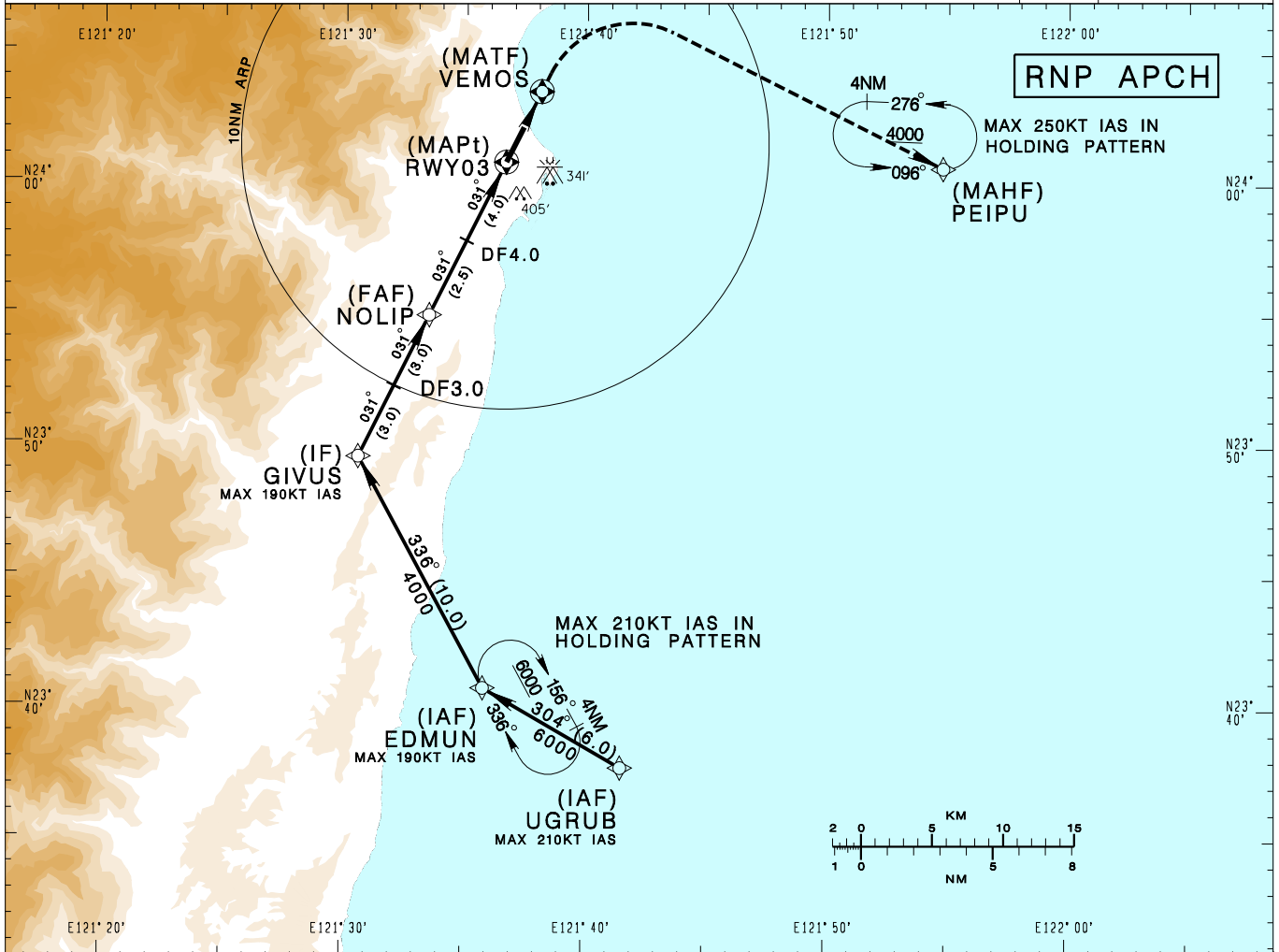


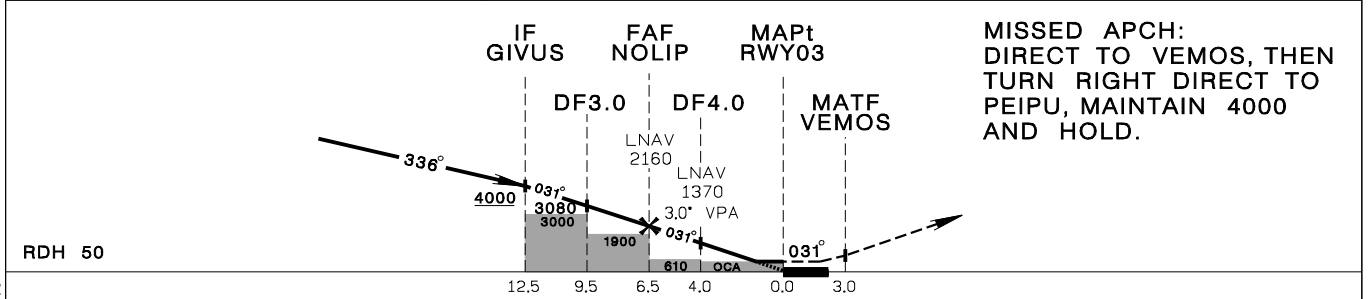
**花蓮機場**  
HUALIEN AD

RCYU  
RNP RWY03

TAIPEI APP 124.0 119.1 330.2 276.8				HUALIEN TWR 118.1 126.18 236.6				VAR 4° W	
Apt Elev: 51'		Rwy03 THR Elev: 44'		Trans Level: FL130		Trans Alt: 11,000'			
BEARINGS ARE MAGNETIC; DISTANCES ARE NAUTICAL MILES; ELEVATIONS, HEIGHTS IN FEET									



6.5(NOLIP)	6	5	4(DF4.0)	3	2	1.5	DIST (NM) to THR 03
2160	2010	1690	1370	1050	740	580	ADVISORY ALT



**MISSED APCH:**  
DIRECT TO VEMOS, THEN  
TURN RIGHT DIRECT TO  
PEIPU, MAINTAIN 4000  
AND HOLD.

MINIMA (OCA IN FT, VIS IN M, OCH IN FT)

CATEGORY		A	B	C	D
LNAV/VNAV	STRAIGHT IN	565/2200 521	565/2200 521	565/2200 521	565/2200 521
	STRAIGHT IN (ALS OUT)	565/2400 521	565/2400 521	565/2400 521	565/2400 521
LNAV	STRAIGHT IN	550/2200 506	550/2200 506	550/2200 506	550/2200 506
	STRAIGHT IN (ALS OUT)	550/2400 506	550/2400 506	550/2400 506	550/2400 506

**NOTE**  
1. CIRCLING NOT AUTHORIZED.  
2. CAUTION HIGH TERRAIN WEST OF THE AIRPORT.  
3. SPEED RESTRICTIONS APPLY AT IAFs, IF & HOLDING PATTERN. CANCEL SPEED RESTRICTION AT FAF(NOLIP).  
4. A 341FT MSL STACK AT 1.52NM EAST OF THR03.  
5. A 405FT MSL TREE AT 1.18NM SE OF THR03.  
6. BARO-VNAV NOT AUTHORIZED BELOW 0°C.

CHANGES: NEW PAGE NUMBER